



Investments
Two-Year Cycle 2016-2018

**GIVE.
ADVOCATE.
VOLUNTEER.**

UnitedWayMidlands.org

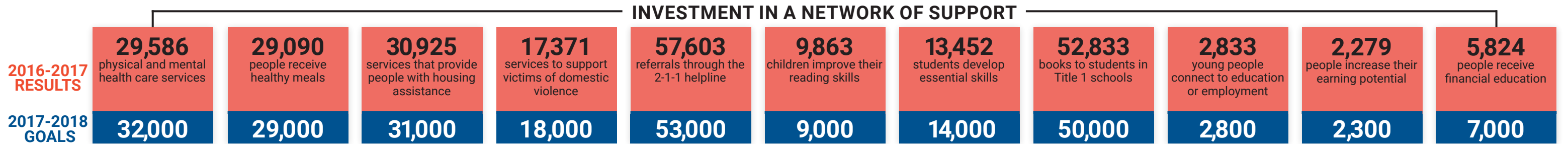
United Way of the Midlands
2201 Farnam Street, Suite 200
Omaha, NE 68102
402.342.8232

United Way
of the Midlands



United Way of the Midlands will invest approximately \$38.6 million for this two-year investment cycle in the Omaha-Council Bluffs metro area.

We are honored to work on behalf of our corporate and individual donors in our community to help our neighbors meet their most basic needs including access to healthy food, physical and mental health services, safe and affordable housing and academic supports. Currently, UWM is in a two-year cycle investing dollars in a network of support with clear measurable goals in more than 120 programs. UWM is working to foster basic need help for individuals and families to attain their full potential, investing in wraparound supports to ensure children come to school prepared to learn and succeed and to improve the financial stability of local residents to develop the fundamental skills needed to gain and sustain a job.



One person, on their own, may not have much reach. But when we put our efforts together, and leverage the volunteer resources and experienced know-how of United Way, thousands of lives are changed for the better. We ensure donors' dollars are invested wisely for maximum impact.

Thank you for helping make our community stronger!

OUR PARTNERS:

African American Empowerment Network:

- Step Up and Work Experience Program

American Red Cross - Omaha Council Bluffs Metro:

- Disaster Preparedness, Response & Recovery

Big Brothers Big Sisters of the Midlands:

- Community-Based Mentoring for Children Facing Adversity

Boys and Girls Clubs of the Midlands:

- BGCM - Ready to Learn and Succeed
- Support for Children in Poverty

Catholic Charities Diocese of Des Moines/Council Bluffs:

- Phoenix House Domestic Violence Shelter and Sexual Abuse Program

Catholic Charities of the Archdiocese of Omaha:

- Catholic Charities Senior Centers
- Catholic Charities Neighborhood Centers
- Domestic Violence Services - The Shelter

Charles Drew Health Center:

- CDHC Integrated Behavioral Health Program
- Charles Drew-One World Mobile Dental Clinic

Child Saving Institute, Inc.:

- Child and Adolescent Therapy
- Child Saving Institute's Emergency Shelter Services
- Child Saving Institute's Parenting Program
- Pregnancy Counseling/Adoption
- KidSquad
- School and Family Enrichment

City Sprouts Inc.:

- City Sprouts Internship

College Possible:

- College Possible Omaha's Core Program

Communities in Schools of Mid-America Inc.:

- Integrated Student Support

Community Alliance Rehabilitation Service:

- Crossroads to Health & Recovery
- Shelter Peer Support
- Supported Education/Employment for Young Adults

Completely KIDS:

- Completely KIDS Family Strengthening Programs
- Out-of-School Time Programs
- Out-of-School Time Programs for Homeless Children

Council Bluffs Senior Center, Inc.:

- Senior Wellness

Family Housing Advisory Services, Inc.:

- EITC - Earned Income Tax Coalition
- Fair Housing Center of Nebraska - Iowa
- Financial Fitness & Asset Management
- Homeownership Education Program
- Tenant Services

Family, Inc.:

- Parents as Teachers - Early Childhood Home Visitation

Father Flanagan's Boys Home:

- Boys Town of Iowa's In-Home Family Services
- Ways to Work

Girl Scouts of Greater Iowa:

- Girl Scout Leadership Experience

Girl Scouts Spirit of Nebraska:

- Girl Scouts Spirit of Nebraska - Outreach

Girls Incorporated of Omaha:

- The Girls Inc. Experience

Goodwill Industries Inc.:

- YouthBuild

Greater Omaha Attendance And Learning Services:

- GOALS Center

Heartland Family Service:

- Community Education
- Domestic Abuse Sexual Assault Program
- Hardship Assistance
- Professional Counseling - Behavioral Health
- Ready in 5
- Ruth K. Solomon Girls Center
- Senior Center
- Ways to Work

Heartland Hope Mission:

- Hunger and Homelessness Prevention Program
- Job Paths

HELP Adult Services:

- Health & Medical Equipment Loan Program

Hope Center for Kids, Inc.:

- Hope Employment and Learning Academy

Iowa Legal Aid:

- Family Stabilization Project

Jewish Federation of Omaha:

- Geriatric Counseling
- Mental Health Care and Counseling

Kids Can Community Center:

- Early Childhood Education
- Out-Of-School Programs
- Tutoring & Mentoring Services

Latino Center of the Midlands:

- Adult Basic Education
- Community Services and Technical Assistance
- Pathways to Success

Legal Aid of Nebraska:

- Sustainable Living Project

Literacy Center of the Midlands:

- Workforce Development - Adult Education Programs

Lutheran Family Services of Nebraska, Inc.:

- Behavioral Health Programs
- International Center of the Heartland
- Prenatal and Early Childhood Intervention
- RSafe Therapies
- Refugee Education and Employment Program (REEP) and Successful Transitions to Economic Progress and Sustainability (STEPS)

Metropolitan Community College Foundation:

- AKSARBEN Scholars Career Connectors Program

MICAH House:

- Emergency Shelter Services

Midlands Latino Community Development Corporation:

- Childcare Development Program

Mosaic Community Development:

- Bristol Affordable Housing
- Park Avenue Community Resource Center

Nebraska Children's Home Society Inc.:

- NCHS Child & Family Center - Pathways to the Future Raising Your Grandchildren

Nebraska Urban Indian Health Coalition Inc.:

- Eagle Heights Transitional Living Program

Ollie Webb Center, Inc.:

- Book Club

Omaha Healthy Kids Alliance:

- Project AIR

Omaha Home for Boys:

- Jacobs' Place and Branching Out Programs and Workforce Readiness Programming
- Omaha Home for Boys Residential Care Education Support Services
- Transitional and Independent Living

OneWorld Community Health Centers, Inc.:

- Community Clinics Care for Children
- Health Supportive Services
- Integrated Health Care Team (IHCT) Integrated Primary and Behavioral Health Care (IPBHC)
- International Center Health Education
- Promotoras for Douglas County

Partnership 4 Kids:

- P4K Pathway Program

Rebuilding Together Omaha:

- Healthy at Home

Refugee Empowerment Center:

- Employment Services Program
- Refugee Resettlement Support
- Refugee Social Services Program

Siena/Francis House:

- Emergency Shelter Program for Men, Women and Children
- Meal Program
- Rehousing and Reintegration Services

Southwest Iowa Families Inc.:

- Nest Program

Stephen Center Inc.:

- Campus-Wide Case Management and Outreach
- Housing Transition Support
- Pettigrew Emergency Shelter Operations

Teammates Mentoring Program:

- Metro Omaha Match Growth and Support

The Salvation Army-NE:

- Omaha Metro Corps Recreational Programs
- Youth Enrichment Programs/Tutoring Program
- Community Counseling and Wellspring Program
- Material Assistance and Seasonal Services
- Schools Out Feeding Program
- The Salvation Army Omaha Area Feeding Programs
- Transitional Housing Residential Unit

Together Inc. of Metropolitan Omaha:

- First Stop Program

Urban League of Nebraska, Inc.:

- Employment and Career Services
- Truancy Reduction Program
- Violence Prevention and Youthful Offender Re-entry Program
- Whitney M. Young Leadership Academy

Visiting Nurse Association:

- Home Health Aide
- Home Health Care
- Maternal and Infant Home Health Care
- Maternal Child Community Home Visitation

Women's Center for Advancement (WCA):

- WCA Self-Sufficiency Program
- Domestic Violence/Sexual Assault Safety Services
- Education and Prevention

YMCA of Greater Omaha:

- Aquatics for All Ages
- Early Childhood Education for At-Risk Youth
- Ready in Five - IC School Readiness
- Y Ready to Learn
- Y School Year/Summer Out-of-School-Time
- Y Teen Safety Net Program
- Youth Sports for At Risk Youth

Youth Emergency Services Inc.:

- Partnership for Youth Job Skill Development

2-1-1 is a valuable service that is provided within our Omaha-Council Bluffs metro area, nine counties in Southwest Iowa and across the state of Nebraska. It is a helpline that connects people in need to services that can help. The call is free and available Monday through Friday from 7 am to 8 pm and Saturday from 8 am to 5 pm.

Attendance Initiative is an initiative UWM is collaborating and convening with more than 20 stakeholders from 16 organizations (including public schools) committed to reducing chronic absenteeism.

Book Trust Program is a national program that has been brought to the community by UWM's funding. It is a three year pilot that works with ten Title 1 schools across six school districts in the Omaha-Council Bluffs metro to improve grade level reading.

Court Referral Community Service Program is a partnership with UWM and Douglas County Court to connect individuals with useful public service projects that help satisfy their community responsibility.

Raise Me to Read is a program aimed at working to promote literacy and early learning for every child across Pottawattamie County.

Opportunity Youth Alliance and Pilot is a pilot that UWM is collaborating with an alliance that includes over 30 organizations that work to improve the lives of young people, age 16-24, who are not in school or working.

Community Health Charities of Nebraska provides funding to member charities for innovative research to improve lives, offer critical client services, education and prevention programs within our community.

Agencies include:

- The ALS Association Mid-America Chapter
- Alzheimer's Association Nebraska Chapter
- American Diabetes Association of Nebraska
- American Lung Association in Nebraska
- Arthritis Foundation Nebraska
- Autism Action Partnership
- Brain Injury Alliance of Nebraska
- Crohn's & Colitis Foundation, Nebraska/Iowa Chapter
- Cystic Fibrosis Foundation - Nebraska Chapter
- JDRF - Heartland Chapter
- Leukemia & Lymphoma Society - Nebraska Chapter
- March of Dimes, Nebraska & Western Iowa Market
- Muscular Dystrophy Association of Nebraska
- National MS Society - Mid America Chapter
- Nebraska AIDS Project
- Nebraska Chapter of the National Hemophilia Foundation
- Nebraska Community Blood Bank
- Nebraska Hospice and Palliative Care Association
- Nebraska Kidney Association
- Susan G. Komen® Great Plains
- Team Jack Foundation
- United Cerebral Palsy of Nebraska

Donor Directed Investments to other metro area human service programs.